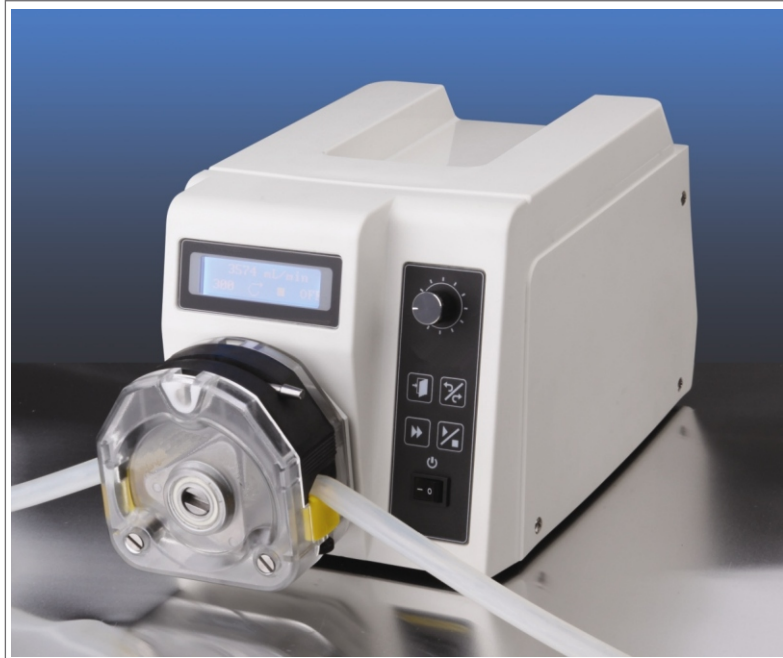


# Dispensing Peristaltic

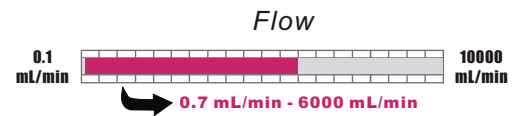
## DWT600-1F

Acceptable various pump heads for DWT600-1F are DYZ1515x, DYZ2515x, DYZII15, DYZII25, DKZ25, DDMD25 and DDG15-24. The pump delivers flow rates from 0.7 mL to 6000 mL/min and dispensing volume is from 0.1 mL to 99.9 L. Combining 128×32 LCD display with membrane keypad and rotary encoded switch makes the operation easy and prompt. The speed can be adjusted manually or automatically through external control interface.



### Functions and Features

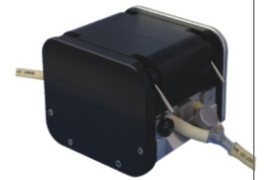
- Acceptable pump heads: DYZ1515x, DYZ2515x, DYZII15, DYZII25, DDG15-24, DKZ25, DDMD25
- Back suction function: In dispensing mode, the pump runs reversely after finishing one filling operation to prevent the liquid from dripping
- Operating mode: Membrane keypad and rotary encoded switch
- Speed control: The speed can be adjusted manually or automatically through external control
- Display: LCD displays current running status and parameters
- Prime key: For fast filling and emptying
- Memory function: Storing the running parameters automatically
- Calibration function: The flow rates and the dispensing volume can be calibrated to increase the accuracy



### Applicable Pump Heads



DYZ1515x  
DYZ2515x



DDMD25



DYZII15  
DYZII25



DKZ25



DDG15-24

### Specifications

- Flow rates:** 0.7 to 6000 mL / min
- Dispensing volume:** 0.1 mL to 99.9 L
- Speed:** 10 to 600 rpm
- Copy number:** 0 to 9999
- Pause time :** 0.1 s to 99.9 min
- Back suction:** 0 to 9.9 revolution
- Flow rates calibrating time:** 0.5 - 30 min
- External control:** start/stop control, direction control, flow rates control(0 - 5V ,0 - 10V , 4 - 20 mA , 0 - 10kHz optional )
- Output interface:** start/stop, direction output and 0 - 10 kHz frequency output
- Communication:** RS485
- Power supply:** AC 176V - 264V, 50Hz/60Hz
- Power consumption:** < 140 W
- Operating condition:** Temperature 0 to 40°C  
Relative humidity < 80%
- Drive Dimensions(L×W×H):**  
285×207×180(mm)
- Drive weight:** 5.2 kg
- IP rating:** IP 31



Drive	Part Number	Pump Head	Tubing	Flow Rates(mL/min)	Weight(kg)	
DWT600 - 1F	D0502661	(1,2)×DYZ1515x	13# 14# 19# 16# 25# 17# 18#	Single channel 0.7 - 2200	5.6 - 6.0	
		(1,2)×DYZII15				
		(1,2)×DYZ2515x	15# 24#	Single channel 17 - 1600		
		(1,2)×DYZII25	15# 24# 35# 36#	Single channel 17 - 3000		
		DKZ25		34 - 6000		6.0
		DDG15 - 24	16# 25# 17#	8.2 - 1800		6.0
		DDMD25(≤350rpm)	119# 120# 15# 24# 35# 36#	5 - 4000		7.7

\* Max. speed for DDMD25 is 350 rpm