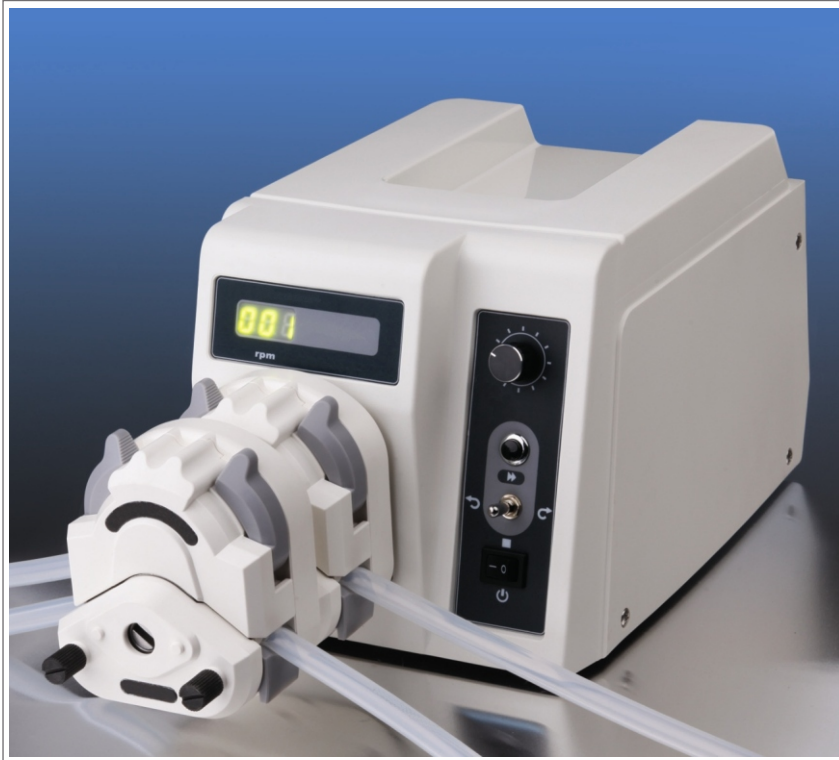


Basic Peristaltic

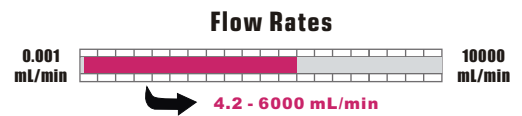
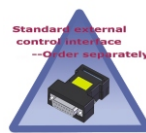
DWT600 - 2J

DWT600-2J peristaltic pump is made with brushless DC motor. It has features of high output torque, low vibration, high efficiency and free maintenance. It can drive double pump heads. It accepts many pump heads and delivers flow rates from 4.2 to 6000 mL/min. The speed can be adjusted manually or automatically through external control.



Functions and Features

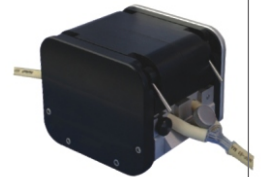
- Prime button: For fast filling and emptying
- Memory function: Store the speed and the address of the pump
- Communication function: Realize the computer control through RS485 interface
- Display: 3 digits LED displays the speed of the pump
- External control input: Control the speed, start/stop and direction of the pump
- Suitable for different pump heads and tubing for multiple application
- High output torque which can drive double pump heads
- Brushless DC motor, high output torque and free maintenance
- Operation mode: Switch, button and knob. Easy to operate



Applicable Pump Heads



DYZ1515x
DYZ2515x



DDMD25



DYZII15
DYZII25



DKZ25



DDG15-24

Specifications

Speed: 60 to 600 rpm
Speed accuracy: $\pm 1.0\%$
Speed resolution: 1.0 rpm
Output torque: $\geq 1.60 \text{ N} \cdot \text{M}$
External control input: Start/stop and cw/ccw control, 0.5 to 5 V, 1 to 10 V, 4 to 20 mA and 1-10 kHz speed control
Communication interface: RS485
Power supply: AC 176 - 264V 50Hz/60Hz
Power consumption: $\leq 200 \text{ W}$
Operating condition: Temperature 0 to 40 °C Relative humidity < 80%
Dimensions(L×W×H): 285×207×180(mm)
Drive weight: 5.2 kg
IP rating: IP 31

Drive	Part Number	Pump Head	Tubing	Flow Rates(mL/min)	Weight(kg)
DWT600 - 2J	D0502631	(1,2)×DYZ1515x	13# 14# 19# 16# 25# 17# 18#	Single channel 4.2 - 2200	5.6 - 6.0
		(1,2)×DYZII15			
		(1,2)×DYZ2515x	15# 24#	Single channel 100 - 1600	
		(1,2)×DYZII25	15# 24# 35# 36#	Single channel 100 - 3000	
		DKZ25		200 - 6000	
		DDG15 - 24	16# 25# 17#	50 - 1800	
DDMD25(≤ 350 rpm)	119# 120# 15# 24# 35# 36#	30 - 4000	7.7		

* Max. speed for DDMD25 is 350 rpm